



Cherie Barber's
mobile
tiny home

STANDARD INCLUSIONS



EXTERNAL INCLUSIONS

- 8 metre x 2.5 metre Trailer Size.
- 9 x Awning Windows.
- 1 x Triple Panel Bi-Fold Window.
- 1 x Sliding Door.
- 1 x External Steel Kliplok Cladding - Standard Range.
- 1 x Gas Hot Water System.



KITCHEN INCLUSIONS

- VJ Wall Cladding.
- 1 x Triple Panel Bi-Fold Window.
- Timber-Look Vinyl Flooring.
- Partial Walnut Timber-Look Ceiling.
- 1 x Parisi Butler's Kitchen Sink.
- Brushed Brass Fixtures & Fittings.
- Up To 2 x Lineal Metres of Polyurethane Kitchen Cabinetry.
- 1 x Laminex Benchtop.
- 1 x Pantry Cabinet.
- 1 x Fridge Cavity Space.
- 1 x Gas Cooktop.
- 1 x Oven.
- 1 x Slide-Out Rangehood.
- Powerpoints / Light Switches As Per Electrical Plan.



BATHROOM INCLUSIONS

- Timber-Look Vinyl Flooring.
- Walnut Timber-Look Ceiling.
- 1 x Standard Shower.
- 1 x Standard Toilet.
- 1 x Large Bathroom Sink.
- 1 x Vanity Cabinet.
- 1 x Provision for Washing Machine.
- Brushed Brass Fixtures & Fittings.
- Powerpoints / Light Switches As Per Electrical Plan.





DINING AREA INCLUSIONS

- Timber-Look Vinyl Flooring.
- 1 x Built-In Dining Table.
- 2 x Faux Leather Booth-Style Seats.
- 2 x Under-Eat Storage Drawers.
- 1 x Storage Cabinet.

LOBBY / LOFT INCLUSIONS

- 1 x Ceiling Fan.
- 1 x Moveable Ladder for Loft Areas.
- Powerpoints / Light Switches As Per Electrical Plan.





LIVING ROOM INCLUSIONS

- VJ Wall Cladding.
- Timber-Look Vinyl Flooring.
- Partial Walnut Timber-Look Ceiling.
- Downlights / Powerpoints / Light Switches / TV Socket As Per Electrical Plan.





MASTER LOFT BEDROOM INCLUSIONS

- VJ Wall Cladding.
- Timber-Look Vinyl Flooring.
- 1 x Plantation Privacy Shutters.
- 1 x Clothes Hanging Rail.
- 6 x Wardrobe Storage Bays.
- Mattress Platform.
- Downlights / Powerpoints / Light Switches As Per Electrical Plan.



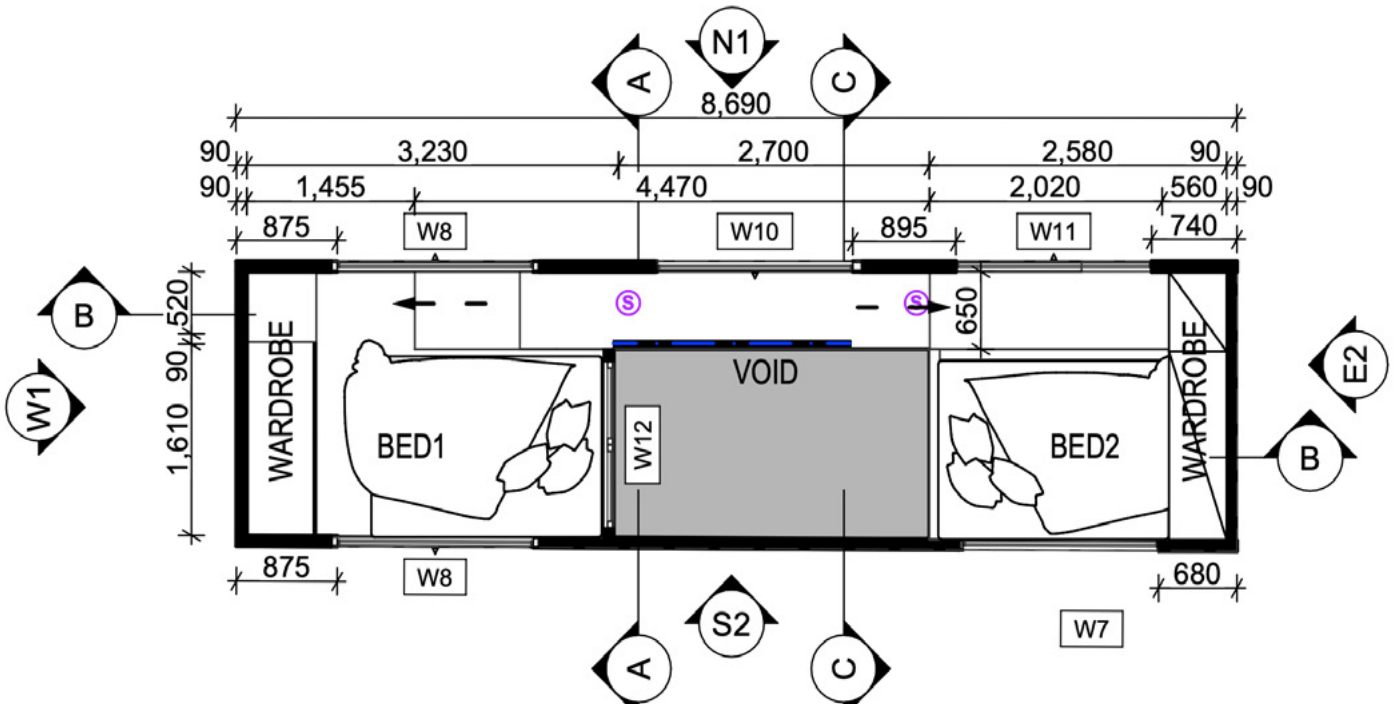
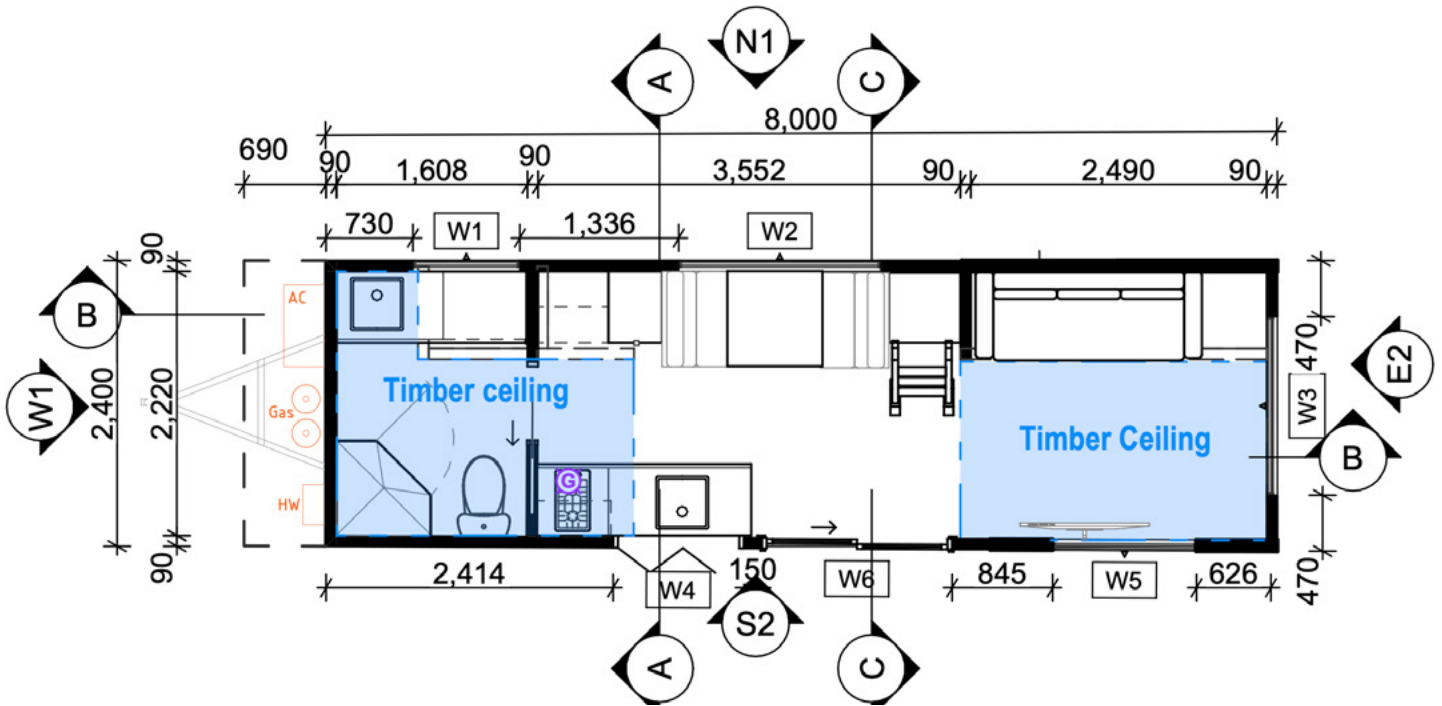


LOFT BEDROOM 2 INCLUSIONS

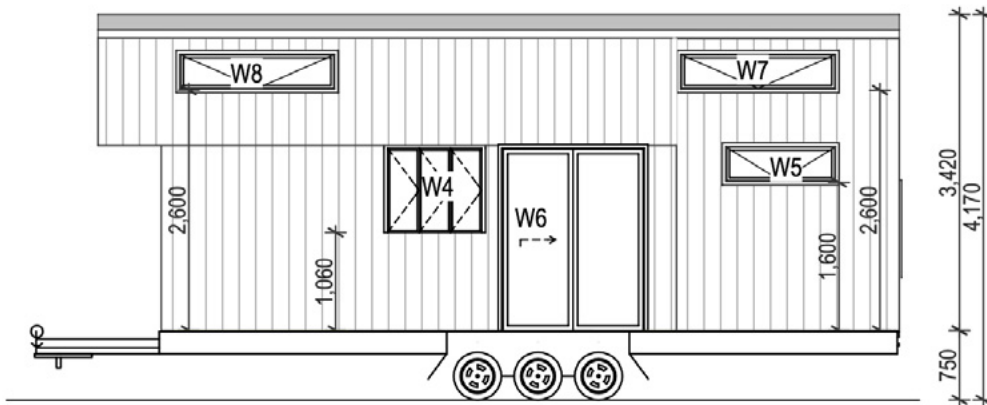
- VJ Wall Cladding & Ceiling.
- Timber-Look Vinyl Flooring.
- 1 x Clothes Hanging Rail.
- 6 x Wardrobe Storage Bays.
- Mattress Platform.
- Downlights / Powerpoints / Light Switches As Per Electrical Plan.



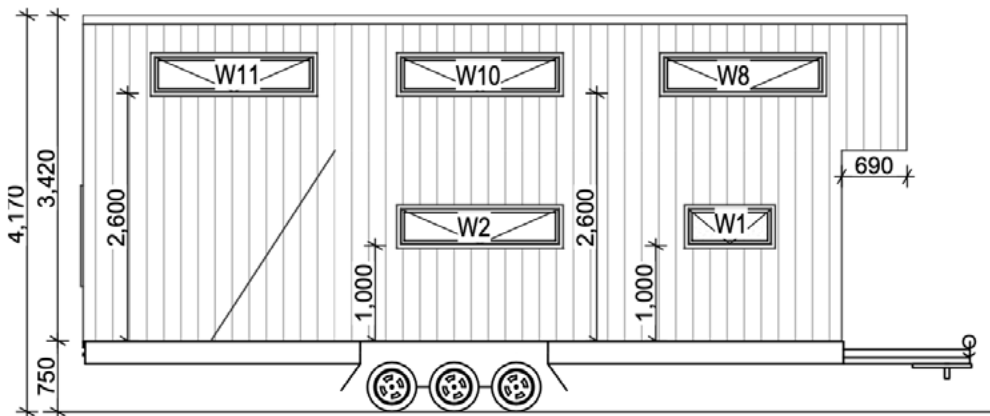
FLOOR PLAN



ELEVATIONS

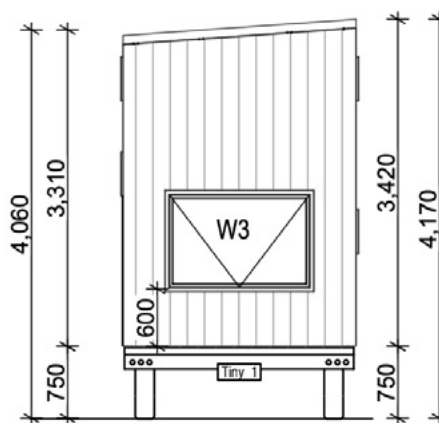


SOUTH ELEVATION

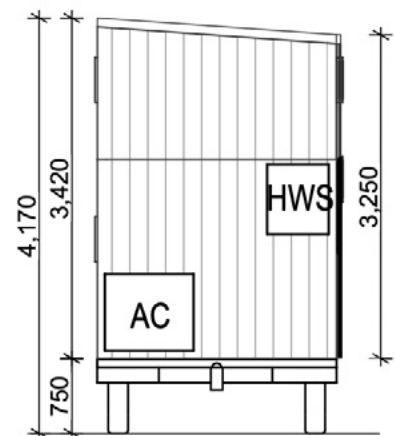


NORTH ELEVATION

- Length:** 8.0 metres
- Width:** 2.5 metres
- Height:** 4.2 metres
- Weight:** 4.5 tonnes
- Axels:** 3
- Bedrooms:** 2
- Sleeps:** 4 people
- Lofts:** 2
- Loft Height:** 1 metre

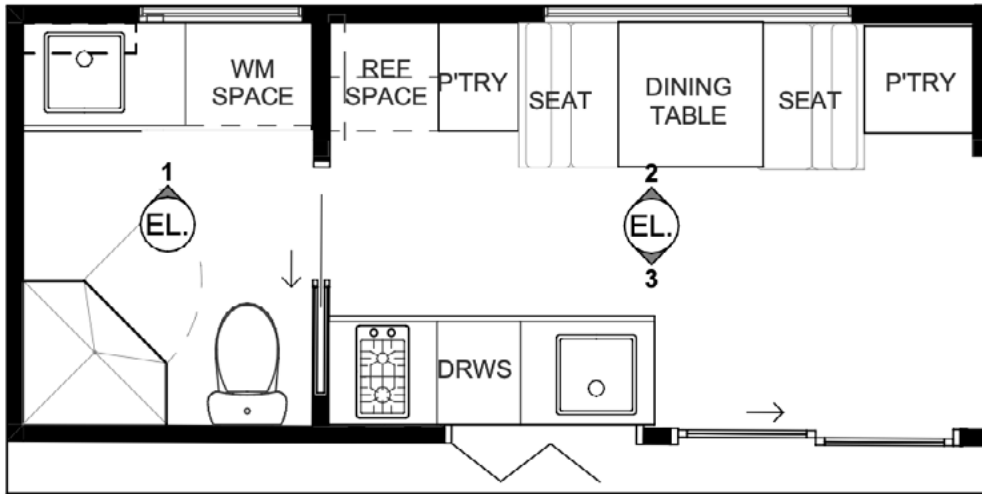


EAST ELEVATION



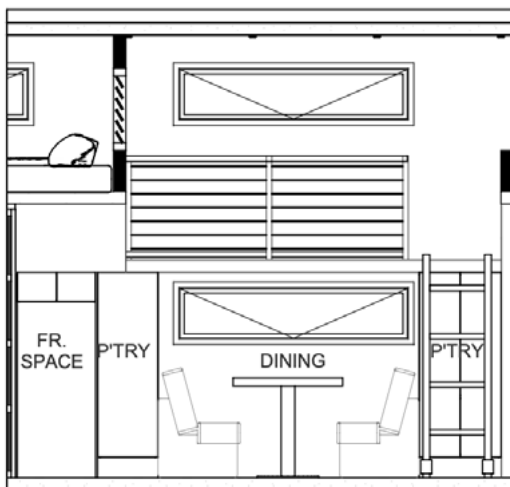
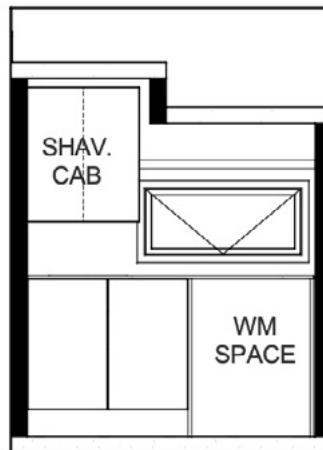
WEST ELEVATION

KITCHEN & BATHROOM

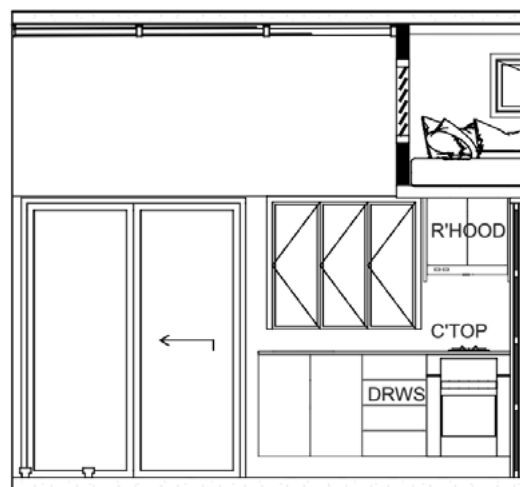


GROUND FLOOR

ELEVATION 1

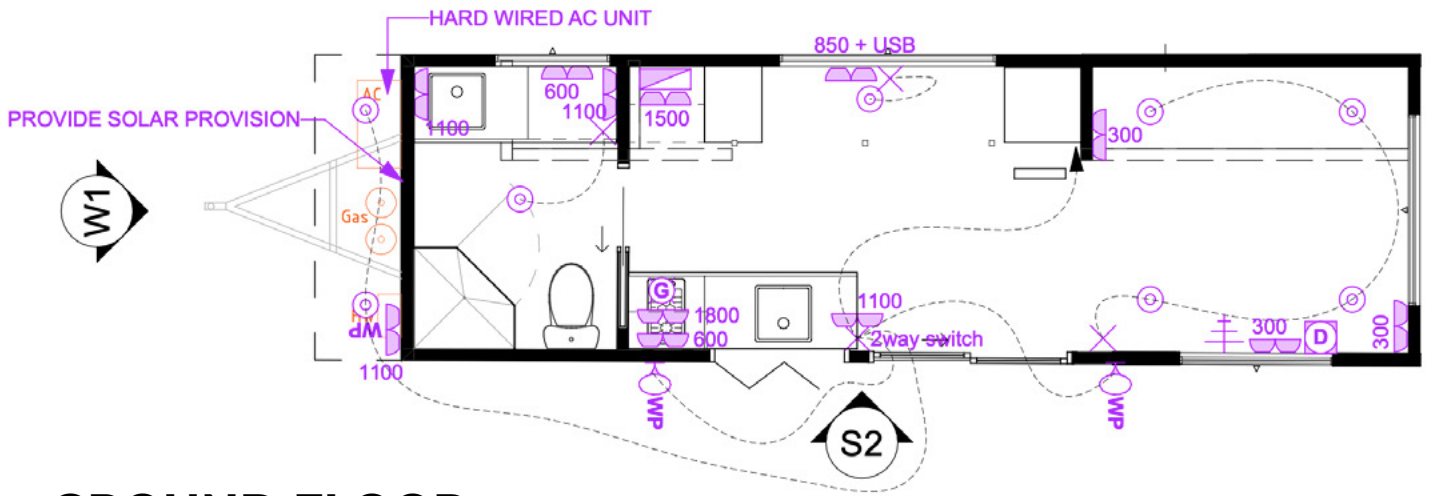


ELEVATION 2

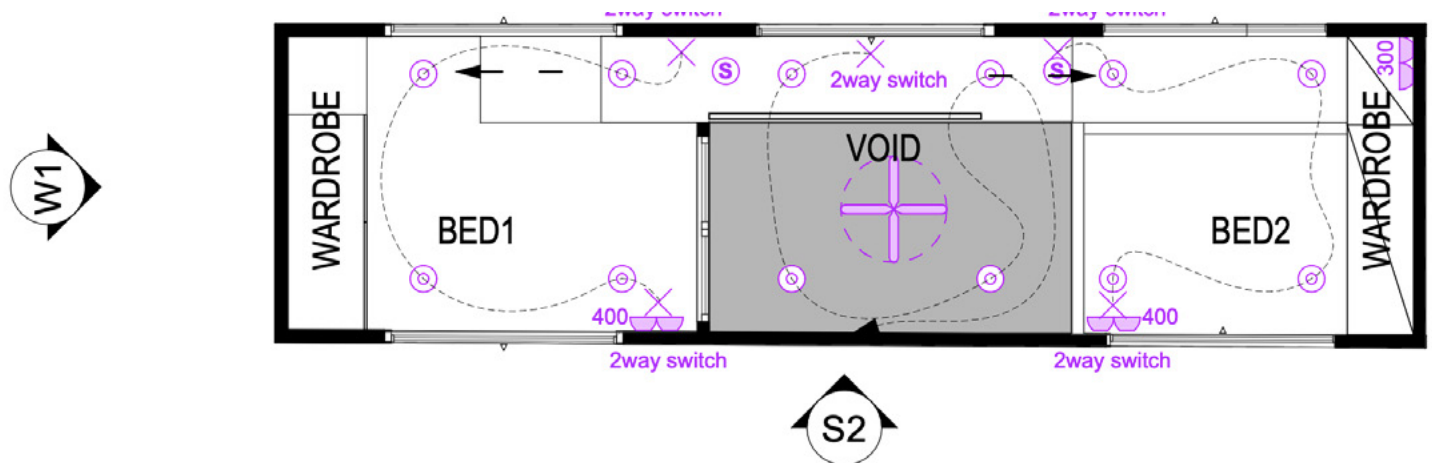


ELEVATION 3

ELECTRICAL PLAN



GROUND FLOOR



FIRST FLOOR

ELECTRICAL SCHEDULE		
SYMBOL	NAME	QTY
⊕	CEILING FAN	1
⊙	DATA OUTLET	1
▭	DISTRIBUTION BOARD	1
⊗	GAS OUTLET	1
⌋	GENERAL POWER OUTLET (DOUBLE)	14
⌋ _{WP}	GENERAL POWER OUTLET (WATER PROOF)	1
⊙	LED DOWNLIGHT	20

ELECTRICAL SCHEDULE		
SYMBOL	NAME	QTY
⌋ _{WP}	GENERAL POWER OUTLET (WATER PROOF)	1
⊙	LED DOWNLIGHT	20
×	LIGHT SWITCH	9
⊙	SMOKE ALARM	2
≡	TV OUTLET	1
⌋ _{WP}	WALL LIGHT (WATER PROOF)	2

EXCLUSIONS

- Decking.
- Furniture / Furnishings.
- Trailer Registration.
- Airconditioning.
- Fridge / Washing Machine.
- Transport To Your Location.
- Site Preparation.
- Site Services Connections (i.e. plumbing & electrical connection to existing house).



Cherie Barber's
**mobile
tiny home**



\$145,000.00 inc. GST

Available in white or black external colour.

Delivery to all states of Australia (Freight charges apply).

For sales enquiries or to order
your **Cherie Barber Mobile Tiny Home**:

tinyhome
solutions

(02) 9481 7442

info@tinychomesolutions.com.au